

GENZERO

ZERO EMISSIONS – MAXIMUM POWER



GenZero 500W
500Wh Capacity Battery

GenZero 800W
2000Wh Capacity Battery

GenZero 1800W
3000Wh Capacity Battery

500W
CONTINUOUS OUTPUT

800W
PEAK OUTPUT

800W
CONTINUOUS OUTPUT

1600W
PEAK OUTPUT

1800W
CONTINUOUS OUTPUT

3600W
PEAK OUTPUT

Introducing **GenZero**, NightSearcher's innovative range of battery powered generators. A selection of three portable generators designed to provide reliable and efficient power to areas where it's needed the most. Perfect for both industrial and residential applications, **GenZero** generators provide maximum electric power with zero emissions.

Delivering power to areas with restricted access to an electricity supply.

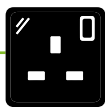
Ideal for emergency power in natural disasters • Working on large or remote sites • Powering appliances outdoors
Operating power tools and lighting • Camp sites and other recreational uses

- ✓ Safe and reliable power supply
- ✓ Long cycle life
- ✓ Easy to operate
- ✓ Rechargeable batteries

Recharges From:



Solar Panel
(DC)



Wall Outlet
(AC)

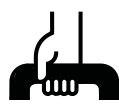


Vehicle
(DC)

Key Features:



Quick Set
In An
Emergency



One Person
Lift + Easy To
Transport



LCD Battery
Status
Indicator



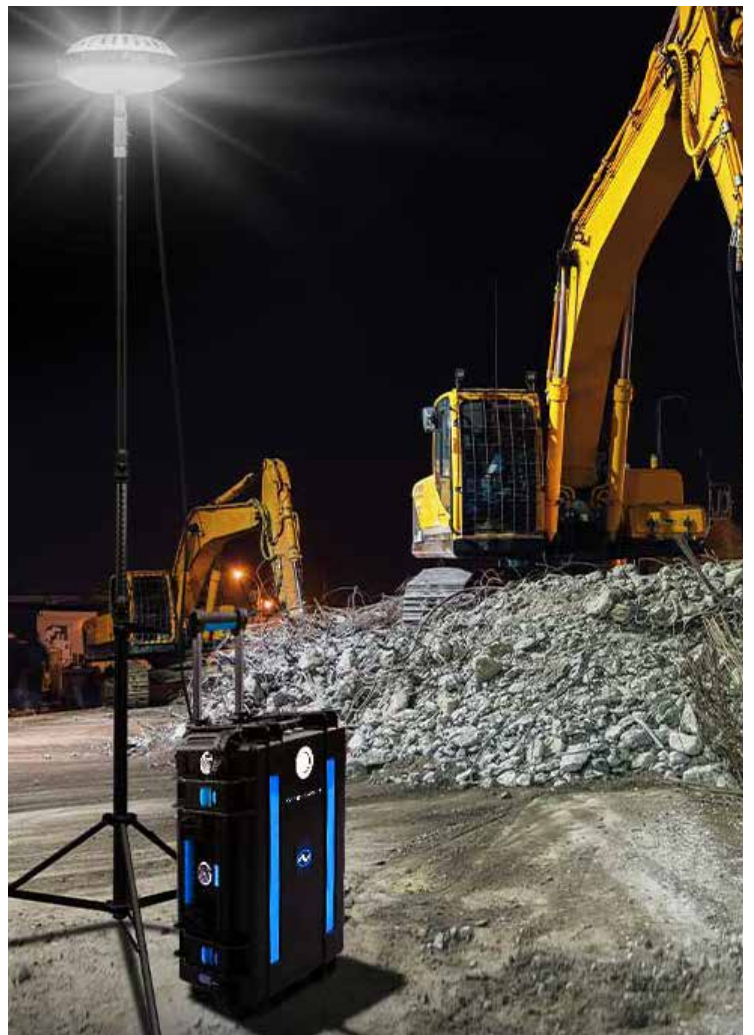
Reliable Pure
Sine Wave
Output



Robust
Protective
Cases



Multiple
Outlet
Voltages



- ZERO EMISSIONS**
- ZERO FUEL COST**
- ZERO NOISE**
- ZERO MAINTENANCE**

**230V
or 110V**



GenZero 1800W GenZero 800W GenZero 500W

Protective Safety Measures



Overheating Protection



Over Current Protection



Over Charge Protection



Over Discharge Protection



Short Circuit Protection

TECHNICAL SPECIFICATIONS

Continuous Output	1800W	800W	500W
Peak Output	3600W	1600W	800W
Battery Capacity	3000Wh	2000Wh	500Wh
Battery Type	Lithium Ion Rechargeable Battery	Lithium Ion Rechargeable Battery	Lithium Ion Rechargeable Battery
Charging Time	6hrs	6-8hrs	3-4hrs
AC Output Voltage	230V or 110V	230V or 110V	230V or 110V
DC Outputs	12V/3A (Max)	12V/10A (Max)	12V/10A (Max)
USB Outputs	5V/1A	-	2 x Type-C Output: PD60W 2 x USB-A Output: 12V/1.5A
Charging Input	TBD	29.4VDC 10A adaptor	20.0VDC 5A adaptor
Charge Methods	AC-DC mains charger / Solar panel charger / Vehicle charger		
Frequency Range	50-60Hz		
Sine Wave Type	Pure Sine Wave		
Life of Battery	More than 3000 cycles		
IP Rating	110V IP44/IP54/IP65 depending on AC output plug fitted		
Protection	Over Charge, Over-voltage, Over temperature, Overload, AC short circuit protection, Over Current		
Supplied with	AC Mains Charger		
Net Weight	25kg	16kg	5kg
Dimension	348Lx205Wx458H mm	413Lx260Wx156H mm	241Lx161Wx181H mm

